



TECH
SPECS

TECHNICAL SPECIFICATIONS

FIRE RATED STEEL DOORS

D&A
ENGINEERING
Architectural, Glazing & Structural
Metalwork Specialists



FIRE RATED STEEL DOORS

FRAME

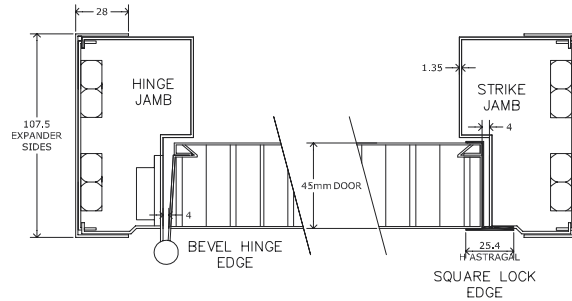
- Manufactured from 1.6 mm thick 'Rustec' steel.*
- Single rebate 104mm wide frame with additional rebate for flush lip.*
- A minimum of six fully adjustable fixing points are provided to each jamb.*
- Unique 'Adjust-2-fit' side channels with each frame.*
- Double rebate frames are available on request.
- 3 year warranty against rust as standard for all colour coated doors.*

LEAF

- 45mm thick door leaf with flush lipped astragal constructed from:
 - 2 x 1.2mm thick 'Rustec' sheets, which are Dutch folded and internally bonded together.*
 - 42mm thick 'Hexatex' core.*
- 3 year warranty against rust as standard for all colour coated doors.*

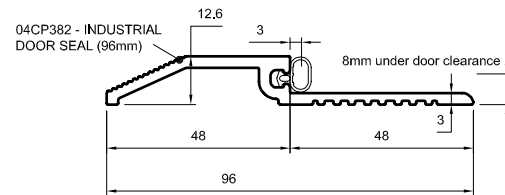
WEIGHT

- 31kg/m² with Honeycomb core and 35kg/m² with Rockwool Core



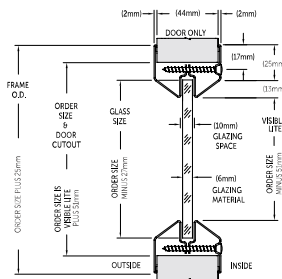
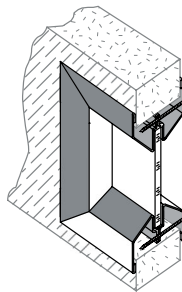
THRESHOLD

- Aluminium threshold with neoprene seal on external outward opening doors.
- Double ramped threshold available for doors needing pallet truck access. – Require rain-drip & brush seal to prevent water ingress.
- Specialist inward opening threshold available where water ingress is an issue on inward opening doors.



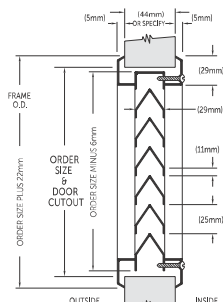
VISION PANELS (Optional)

- 20GA Cold Rolled Steel – Stainless Steel available upon request.
- 5mm and 9mm Ceramic 'Firelite' glass.
- 22mm Double Glazed units.
- Max. Area 0.39m² per leaf.



LOUVRES (Optional)

- 18GA Galvanised Steel – frame.
- 22GA Galvanised Steel – louvre blades.
- 40% Free air flow in standard configuration.
- Bird Mesh and Insect Mesh available.
- 36% Free air flow when using insect mesh.
- Max. Area 0.37m² per leaf (must be installed to the lower of leaf).



Independently tested and certified, Firedor has a full four hour fire test rating. It is available with vision panels, also fire tested to a full four hours, and louvre panels which are fire tested to 2 hours.

DOOR IRONMONGERY

- BS 7352 Grade 13 stainless steel, twin bearing template drilled butt hinges with integral high security dog bolts are fitted as standard with CE marking.

FINISH

- Comes as standard in a powder coated finish in one of our standard colours.
- Full range of RAL and BS colours available.
- Marine Grade finish is available as an option in salt laden coastal or high chlorination locations.
- Full range of finishes available including, metallics and pearlescent.
- 10 year warranty against rust optional with our 'Colourtec' coating.

SEALS

- Strongdor self adhesive P-seal provided as standard.

SIDE PANELS & OVER PANELS (Optional)

- Solid, Glazed and Louvred side and over panels available.

* Available on most doorsets in the range.