



**TECH  
SPECS**

TECHNICAL SPECIFICATIONS

# BESPOKE STEEL DOORS

**D&A**  
**ENGINEERING**  
Architectural, Glazing & Structural  
Metalwork Specialists



# BESPOKE STEEL DOORS



## ENGINEERING

Architectural, Glazing & Structural Metalwork Specialists

### FRAME

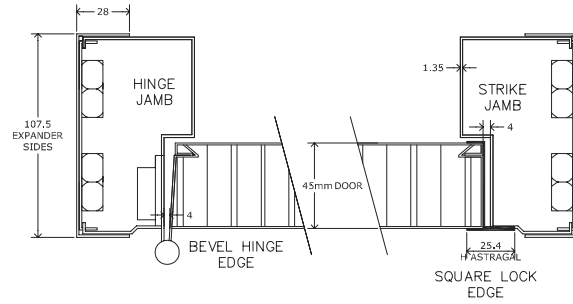
- Manufactured from 1.6 mm thick 'Rustec' steel.\*
- Single rebate 104mm wide frame with additional rebate for flush lip.\*
- A minimum of six fully adjustable fixing points are provided to each jamb.\*
- Unique 'Adjust-2-fit' side channels with each frame.\*
- Double rebate frames are available on request.
- 3 year warranty against rust as standard for all colour coated doors.\*

### LEAF

- 45mm thick Door leaf with flush lipped astragal constructed from:
  - 2 x 1.2mm thick 'Rustec' sheets, which are Dutch folded and internally bonded together.\*
- 42mm thick 'Hexatex' core.\*
- 3 year warranty against rust as standard for all colour coated doors.\*

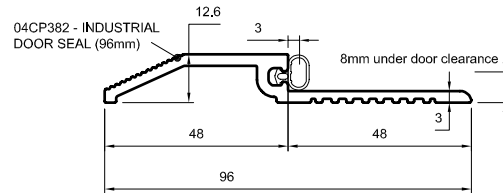
### WEIGHT

- 31kg/m<sup>2</sup> with Honeycomb core and 35kg/m<sup>2</sup> with Rockwool Core



### THRESHOLD

- Aluminium threshold with neoprene seal on external outward opening doors.
- Double ramped threshold available for doors needing pallet truck access. – Require rain-drip & brush seal to prevent water ingress.
- Specialist inward opening threshold available where water ingress is an issue on inward opening doors.



### DOOR IRONMONGERY

- BS 7352 Grade 13 stainless steel, twin bearing template drilled butt hinges with integral high security dog bolts are fitted as standard with CE marking.

### FINISH

- Comes as standard in a powder coated finish in one of our standard colours.
- Full range of RAL and BS colours available.
- Marine Grade finish is available as an option in salt laden coastal or high chlorination locations.
- Full range of finishes available including, metallics and pearlescent.
- 10 year warranty against rust optional with our 'Colourtec' coating.

### SEALS

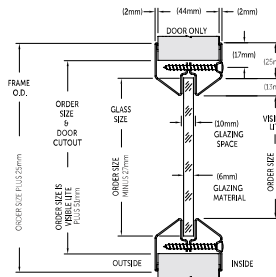
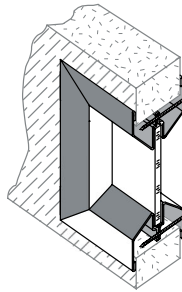
- Strongdor self adhesive P-seal provided as standard.

### SIDE PANELS & OVER PANELS (Optional)

- Solid, Glazed and Louvred side and over panels available.

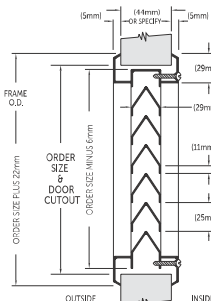
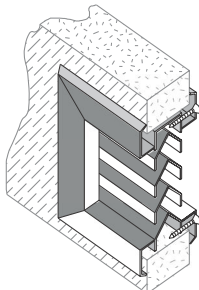
### VISION PANELS (Optional)

- 20GA Cold Rolled Steel – Stainless Steel available upon request.
- Single and Double glazed.
- 6mm GWPP/ 6.4mm Laminated / 6mm Toughened / 9mm Ceramic.
- Obscured and frosted options on request.
- 22mm Double Glazed units.



### LOUVRES (Optional)

- 18GA Galvanised Steel – frame.
- 22GA Galvanised Steel – louvre blades.
- 50% Free air flow in standard configuration.
- Bird Mesh and Insect Mesh available.
- 36% Free air flow when using insect mesh.



For security most doorsets in the range are tested to PAS 24. For air permeability, the standard is BS EN1026:2000 and was passed class 4 – 600Pa (113kmh) test pressure. For weather-tightness, the standard is BS 6375: Part 1: 2009 (test to BS EN1026:2000, BS EN1027:2000, BS EN12211:2000) and Steelдор passed the 1200 exposure rating. For water-tightness, the standard BS EN1027:2000 was passed 150Pa for outward opening and 100Pa for inward opening. For wind load the BS EN12211:2000 standard was passed 1200Pa (Class A3) 98 mph.

\* Available on most doorsets in the range.

